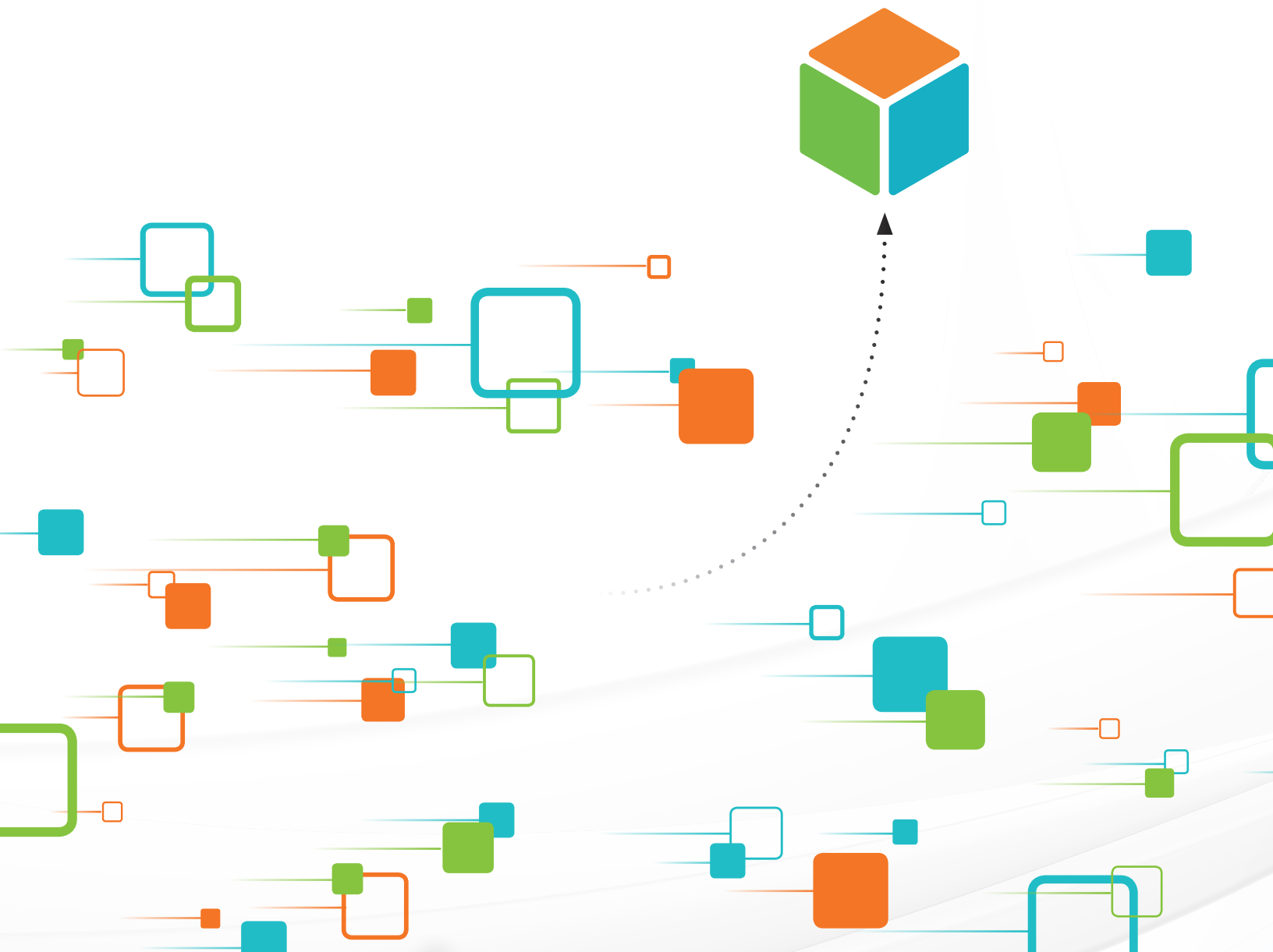




# One Powerful Program Offers You More

A connected system designed to  
simplify teachers' lives and make  
classrooms more efficient





# The Challenge of Reaching Every Student

Teachers want to make the best use of every minute of instructional time and give each child what they need to grow, but planning time is scarce. To have the right instructional plans to reach every student, teachers must:



# The Value of Data Connected to Instructional Action

*i-Ready* gives educators a rich understanding of what instruction each child needs to grow, connected directly to the instructional resources and action they need, making the most out of every lesson.

4

**Group students for instruction**

5

**Gather instructional resources**


6

**Teach**

The screen displays the following content:

**i-Ready** Ask and Answer Questions About Key Details — Quiz — Level B

Dandelions are tough plants. They can grow just about anywhere! These plants might look cute and fluffy. But they have tough plant parts that help them survive.



The leaves of a dandelion protect it.

Dandelions have tough leaves. Each plant has a ring of leaves at the bottom of its stem. The leaves keep other plants from growing too close. This way the dandelion gets plenty of sun, air, and soil. It needs these things to live.

Read the underlined words. What does the word mean?

- large
- pretty
- strong

# The Challenge of Using Multiple Programs

Multiple programs means many systems to learn, separate streams of data, and instructional resources that require significant time and effort for teachers to connect to data and student needs.

## Progress Monitoring Tool

Cost for Reading  
Cost for Math

## Differentiated Instructional Resources

Purchased, gathered,  
or created separately

## Diagnostic Assessment

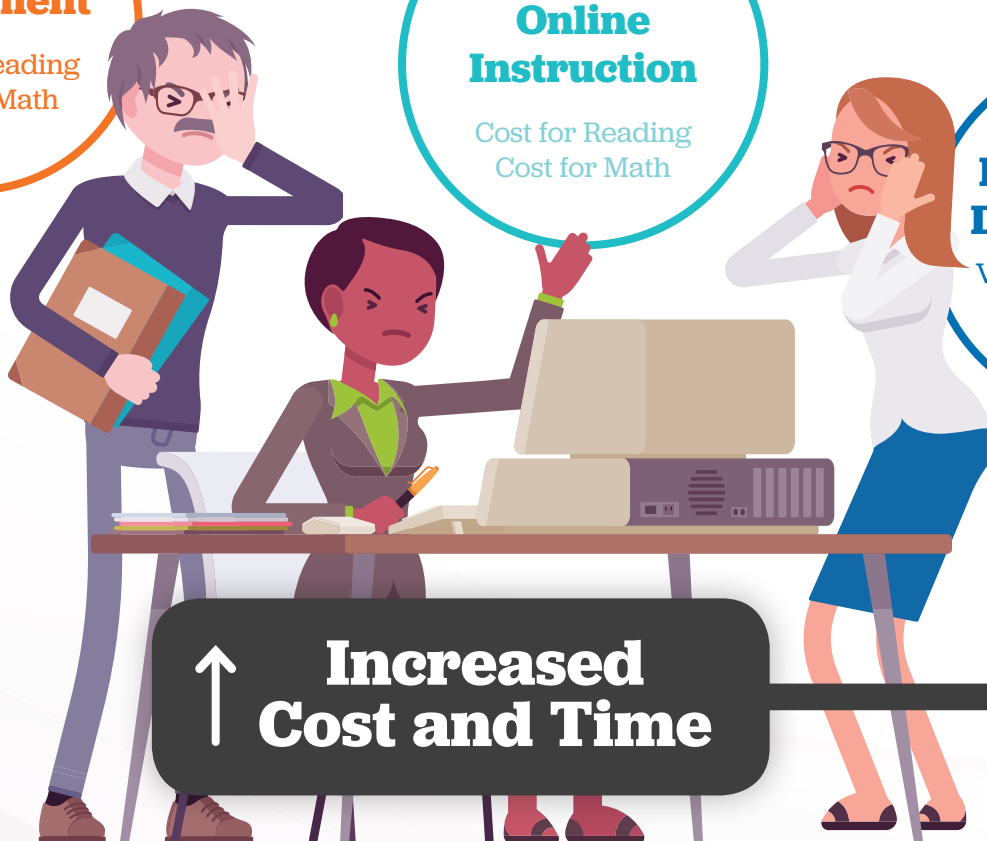
Cost for Reading  
Cost for Math

## Personalized Online Instruction

Cost for Reading  
Cost for Math

## Professional Development

Varies per program



↑ Increased  
Cost and Time

ver

# The Value of Many Programs in One

*i-Ready* offers a single platform that reduces complexity, saves time, and helps teachers use data to differentiate their instruction.

“We went with *i-Ready* because it gives us two-for-one: an assessment program and an online instruction program. The cost savings were important, but the time it saved our teachers was more important.”

—District Administrator, FL



**Both Reading and Mathematics**

**Adaptive Diagnostic**

**Differentiated Instructional Resources**

**Personalized Online Instruction**

**Product Support and Partnership**

**Progress Monitoring Tool**

The screenshot shows the i-Ready dashboard interface. At the top, there is a navigation bar with the i-Ready logo, 'Rosters', 'Assess & Teach', 'Reports', 'Help', and a user profile 'Regina Moore'. Below the navigation bar is a main menu with five tiles: 'Diagnostic Status', 'Diagnostic Results', 'Instruction', 'Standards Mastery', and 'Diagnostic Growth'. A dropdown menu is open under 'Reading', showing 'Reading' and 'Mathematics' options. Below the main menu, there is a section for 'Overall Placement' with a pie chart and a legend. The legend shows two categories: '2 Students' (30% On or Above Grade Level) and '6 Students' (10% One Grade Level Below). A 'View Domain Placements' link is at the bottom. To the right, there is a 'Tips' section with a heading 'While your students complete the Diagnostic, here are some resources:' and two links: 'Understanding Data' and 'Making Small Groups'. A large black arrow points from the left towards a dark grey box containing the text 'One Lower Cost' with a downward-pointing arrow.

SUS

↓ **One Lower Cost**





# The Challenge of Keeping Up with the Evolving Needs of Classrooms

Change is constant for educators—whether it’s state standards, state requirements, educational best practices, or student populations—and a constantly changing landscape means that educational programs must keep up with the needs of classrooms.

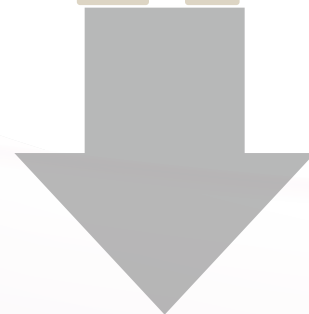
“This doesn’t align to the current standards.”



“This doesn’t reflect what matters to my students.”



“This doesn’t look like it matches best practices.”



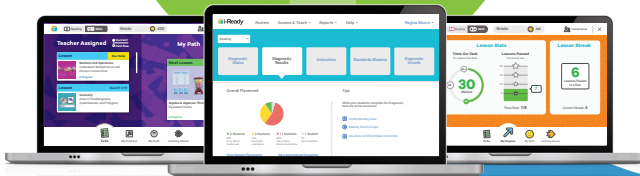
# The Value of Never Staying Still

We listen to what educators need, we look deeply into what drives student growth, and our long history of continual updates reflects our commitment to making *i-Ready* better every day.

**73%**  
of lessons  
are new  
within the last three years



**60+**  
platform updates/year  
.....  
Completely  
new interfaces  
for students and educators  
within the last two years



Nearly  
**3,000**  
new  
assessment  
items this year



# One Program Does More!

*i-Ready* allows districts to eliminate overlapping assessments and deliver instruction accurately targeted to students' needs.

## *i-Ready Assessment* can be used by districts for:

### Screening and Placement:

- ✓ Reading and Math General Screener
- ✓ Third Grade Alternative Reading Assessment
- ✓ National Norms for Intervention and Gifted/Talented Identification

### Intervention:

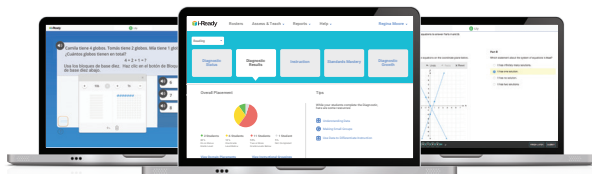
- ✓ MTSS/RTI/Intervention Screener
- ✓ Progress/Growth Monitoring

### Effectiveness Metric:

- ✓ Accountability
- ✓ High Correlations with State Tests

### Classroom Assessment:

- ✓ Automatic Small Group Creation
- ✓ Data for Instructional Planning
- ✓ Data for Student/Teacher/School Goal Setting
- ✓ Data for Sub-Group Analysis
- ✓ Formative Assessment
- ✓ Benchmark Assessment
- ✓ Standards Performance
- ✓ Growth Measures
- ✓ Custom Data Analytics
- ✓ Lexiles®/Quantiles®



Adaptive Diagnostic | Standards Mastery | Growth Monitoring

## *i-Ready Learning* can be used by districts for:

- ✓ Individualized Online Instruction
- ✓ Teacher-Led Differentiated and On-Grade Level Instruction
- ✓ Individual and Small Group Differentiated Instruction
- ✓ Enrichment Instruction
- ✓ Learning Games for Math Practice
- ✓ Extensive and Systematic Practice
- ✓ Assignable Lessons for Grade-Level Practice
- ✓ Progress Monitoring
- ✓ Skills Acquisition



Online Instruction | Learning Games | Differentiated Instructional Resources

*Lexile® and Quantile® are registered trademarks of MetaMetrics, Inc., and are registered in the United States and abroad. Copyright © 2019 MetaMetrics, Inc. All rights reserved.*

Discover  
the power of  
one program at  
[i-Ready.com/Tour](https://www.i-ready.com/Tour)

 **i-Ready®**

